



Training Pathways

Seamless
Future
Rail Skills



Occupation

Track Welder

Job Role

Track Welding Operator (Flashbutt Welder)

Occupation Description

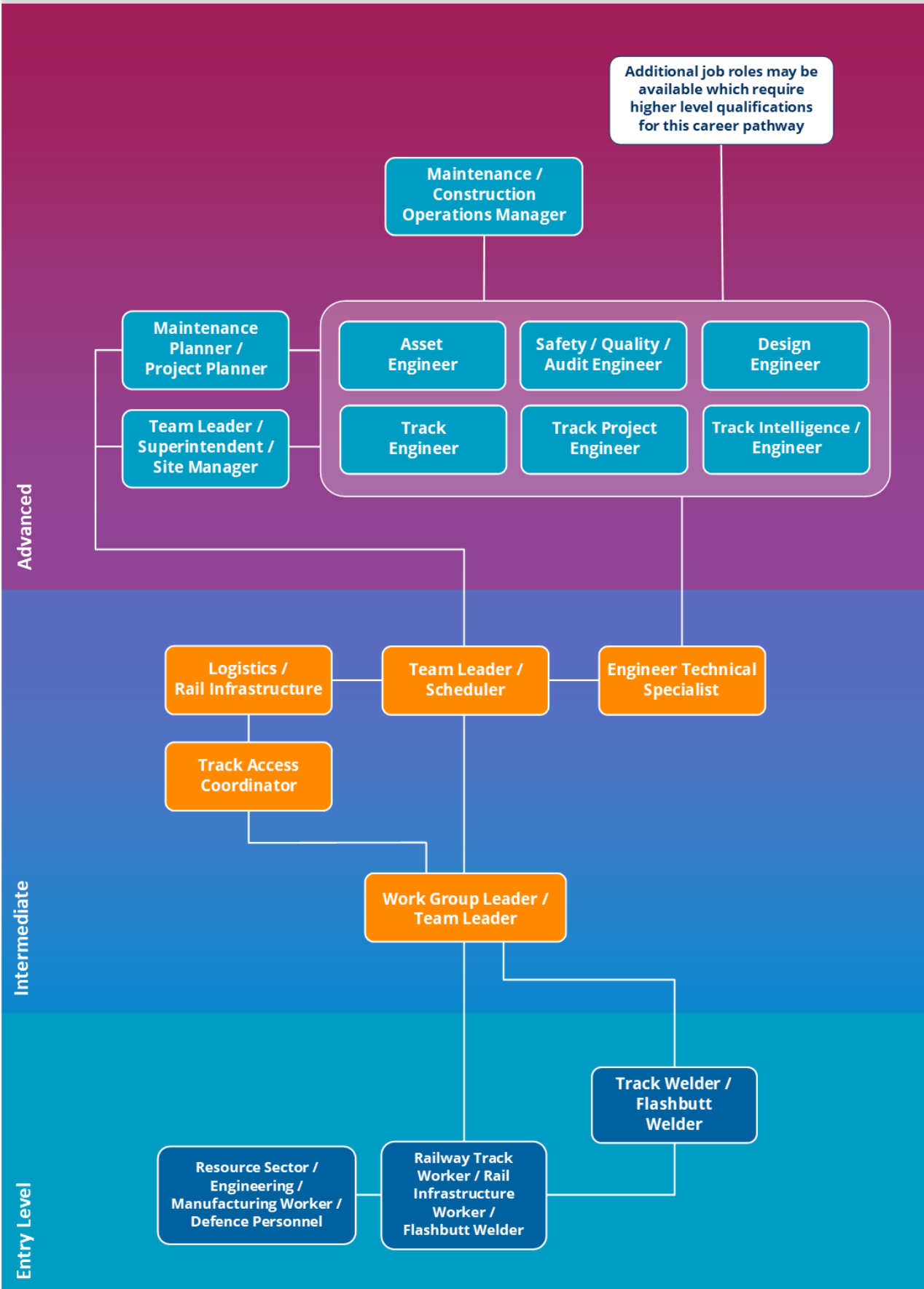
Track welding operators prepare, plan, and setup rail and welding processes. They perform and check conformance of welds, and cut and grind rail in addition to maintaining mobile plant related work equipment.

Entry Pathways into this Occupation:

- Construction or Property services workers
- Defence personnel
- Engineering/manufacturing worker
- Railway Track Plant Operator
- Railway Track Worker
- Resource sector worker.

ANZSCO: 323213

Track Welding Operator (Flashbutt Welder) — Possible career progression in the workplace



Occupation

Track Welder

Job Role

Track Welding Operator (Flashbutt Welder)

Certificate II in Rail Infrastructure

- Generally, an entry level qualification.
- Foundation technical and safety skills for Rail Infrastructure Workers.
- Complete 16 Nationally recognised Units of Competency.
- Practical field base delivery model.
- Flexible program design allows multiple Entry and Exit Points.

Certificate III in Rail Infrastructure

- Generally, an operator level qualification.
- Core skills and specialist skills required to undertake a variety of complex technical tasks across various areas of rail.
- Complete 11 Nationally recognised Units of Competency.
- Flexible program design allows multiple Entry and Exit Points.

Certificate IV in Rail Infrastructure

- Generally, a specialised infrastructure leadership level qualification.
- Advanced critical skills in planning, risk management, asset management and frontline leadership.
- Complete 14 Nationally recognised Units of Competency.
- Flexible program design allows multiple Entry and Exit Points.

Diploma of Engineering Infrastructure (Rail) – Accredited Course

- Supplements and enhance knowledge to undertake a variety of roles through development of the Engineering fundamentals across all aspects of track.
- Designed for non-tertiary qualified high potential employees who have progressed through the learning pathways and Graduate Civil Engineers from a non-rail background.

Pathway to further qualification and careers in Rail Infrastructure

Higher level qualifications may be suitable for continuing this training pathway

Track Welding Operator (Flashbutt Welder)

Advanced Diploma

*Sample of Skill Sets

- Rolling Stock Maintenance (Electrical)
- Rolling Stock Maintenance (Mechanical)
- Rolling Stock Maintenance (Technology)
- Rail Infrastructure Induction
- Safety Critical Communications
- Flashbutt Welding

Diploma

°Diploma of Engineering Infrastructure (Rail)
[Accredited Course]

Certificate IV



Certificate III



Certificate II



°Footnote
*Footnote
^Footnote
Refer to the user instructions on the next page.

Pathway from school or employment with appropriate training and/or skills recognition

User Instructions

Further information for understanding training pathways

- Where the (^) symbol appears, entry requirements apply to the qualification.
- A skill set is a single unit of competency or a combination of units of competency from a training package which link to a defined industry need. Skill sets are not formal qualifications but may prepare an individual for a specific job role or a function within a job role, or may allow entry into a formal qualification.
- Skill sets are commonly used to develop individuals or address skills shortages. Qualifications and skill sets allow the workforce to expand their skills and knowledge in their current role and support their career progression.
- (*) The skill sets listed are a sample only and additional skill sets may be available which are suitable for the training pathways shown, depending on individual progression. Skill sets allow fluidity and flexibility between varying Levels of the AQF.
- All qualifications can be undertaken as an Australian apprenticeship, subject to change based on state and territory requirements.
- (°) Diploma of Engineering Infrastructure (Rail) is accessible but enrolment in the qualification may be limited by providers.

Entry Requirements

Qualification	Entry Requirement
TLI47121 Certificate IV in Rail Infrastructure	Certificate III in Mechanical Rail Signalling, or Certificate III in Rail Structures, or Certificate III in Rail Infrastructure, or Certificate III in Track Protection, or Relevant industry experience gained by working in the rail infrastructure environment.
TLI32721 Certificate III in Track Protection	The entry requirement for this qualification is TLI21921 Certificate II in Track Protection or relevant industry experience gained by working in the rail infrastructure environment providing track protection services.
TLI37122 Certificate III in Rail Infrastructure	The entry requirement for this qualification is Certificate II in Rail Infrastructure, or relevant industry experience gained by working in the rail infrastructure environment.

Example Skills Matrix – Track Welding Operator (Flashbutt Welder)

Certificate II in Rail Infrastructure

TLIB0012	Maintain and use hand tools
TLIB1093	Clean equipment and restore worksite
TLIB2085	Apply track fundamentals
TLIB2092	Operate minor mechanical equipment
TLID0020	Shift materials safely using manual handling methods
TLIE1003	Participate in basic workplace communication
TLIF0008	Apply safety critical communications in the rail environment
TLIF0020	Safely access the rail corridor
TLIF0025	Follow work health and safety procedures
TLIF2010	Apply fatigue management strategies
TLIS2034	Install and repair rail fastening systems
TLIS2044	Carry out rail installation
TLIU2008	Apply environmental procedures to rail infrastructure
TLIW0001	Apply rail grinding fundamentals
TLIW0036	Apply electric welding process to rail

Example Skills Matrix – Track Welding Operator (Flashbutt Welder)

Certificate III in Rail Infrastructure

Units from Certificate II in Rail Infrastructure or equivalent, plus:

RIICCM201E	Carry out measurements and calculations
RIICCM203E	Read and interpret plans and job specifications
TLIB3094	Check and repair track geometry
TLIE2007	Use communications systems
TLIE2029	Conduct workplace information briefings
TLIF0008	Apply safety critical communications in the rail environment
TLIF3003	Implement and monitor work health and safety procedures
TLIG2007	Work in a socially diverse environment
TLIJ0003	Apply quality systems
TLIS3026	Implement track maintenance and construction
TLIW0004	Grind rails
TLIW0008	Weld rail using flashbutt welding process